



Operating Instructions Manual

Read through this owner's manual carefully before using the product. Protect yourself and others by observing all safety information, warnings, and cautions. Failure to comply with instructions could result in personal injury and/or damage to product or property. Please retain instructions for future reference.

87-995 1/2" X 13" AIR MINI BELT SANDER



Specifications:

Model	Speed +/- 10% (RPM)	Belt size (in.)	Air Inlet NPT (in.)	Required Pressure (psi)	Weight (lbs)
87-995	16,000	1/2" x 13"	1/4	90*	2.06

*(Note: Dynamic Pressure, which is the pressure while the tool is in operation.)

General Safety Information

This manual contains information that is very important to know and understand. This information is provided for SAFETY and to PREVENT EQUIPMENT PROBLEMS. To help recognize this information, observe the following symbols.

▲ CAUTION *Caution indicates a potentially hazardous situation which, if not avoided, will result in death or serious injury.*

▲ WARNING *Warning indicates a potentially hazardous situation which, if not avoided, could result in death or serious injury.*

▲ DANGER *Danger indicates an imminently hazardous situation which, if not avoided, will result in death or serious injury*

Entanglement Hazards

Keep away from rotating drive.

▲ CAUTION *Do not wear jewelry or loose clothing.*

Choking can occur if neckwear is not kept away from the tool and accessories.

Scalping can occur if hair is not kept away from the tool and accessories.

Avoid direct contact with accessories during use.

Use only proper accessories designed for use with pneumatic screwdrivers, nut runners, impacts, ratchets, grinders, drills, and pulse tools.

Projectile Hazards

Always wear impact-resistant eye and face protection when involved with or near the operation, repair or maintenance of the tool or changing accessories on the tool.

Be sure all others in the area are wearing impact-resistant eye and face protection.

▲ DANGER *Even small projectiles can injure eyes and cause blindness.*

Workplace Hazards

▲ WARNING *Slip/Trip/Fall is a major cause of serious injury or death. Beware of excess hose left on the walking or work surface.*

High sound levels can cause permanent hearing loss. Maintain a balanced body position and secure footing. Repetitive work motions, awkward positions and exposure to vibration can be harmful to hands and arms.

Operators and maintenance personnel must be physically able to handle the bulk, weight and power of this tool.

Installation

Designed to operate on 90 PSI, lower pressure (below 90 PSI) will reduce performance of the tool while higher air pressure (over 90 PSI) raises the performance of the tool beyond its rated capacity and could cause serious damage to tool and user.

▲ WARNING *Always use clean dry air. Excessive moisture and dirt will greatly reduce the life of any air motor.*

We recommend the installation of an inline filter-regulator-lubricator as close to the tool as possible.

Operation

Supply tool with 90 PSI of clean, dry air. Higher pressure drastically reduces tool life. However, line pressure should be increased to compensate for unusually long hoses (over 25ft). Minimum hose size should be 1/4" in diameter with fittings having the same inner diameters.

Air Supply and Connection Hazards

Air under pressure can cause severe injury.

Always shut off air supply, drain hose of air pressure and disconnect tool from air supply when not in use, before changing accessories or when making repairs.

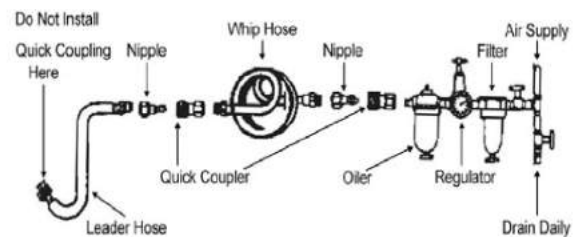
Never direct air at yourself or anyone else.

Whenever universal twist couplings are used, lock pins must be installed.

▲ CAUTION *Do not exceed maximum air pressure of 90 PSI. (Dynamic Operating Pressure)*

Water in the airline will cause damage to the tool.

Drain air tank daily. Clean the air inlet filter screen on a weekly basis. The recommended hook up procedure is below:



Lubrication

Use an airline lubricator, two drops per minute. If an air line lubricator cannot be used, add air motor oil to the inlet once a day, or more frequently for extended use.

Manufacturer's Limited Warranty

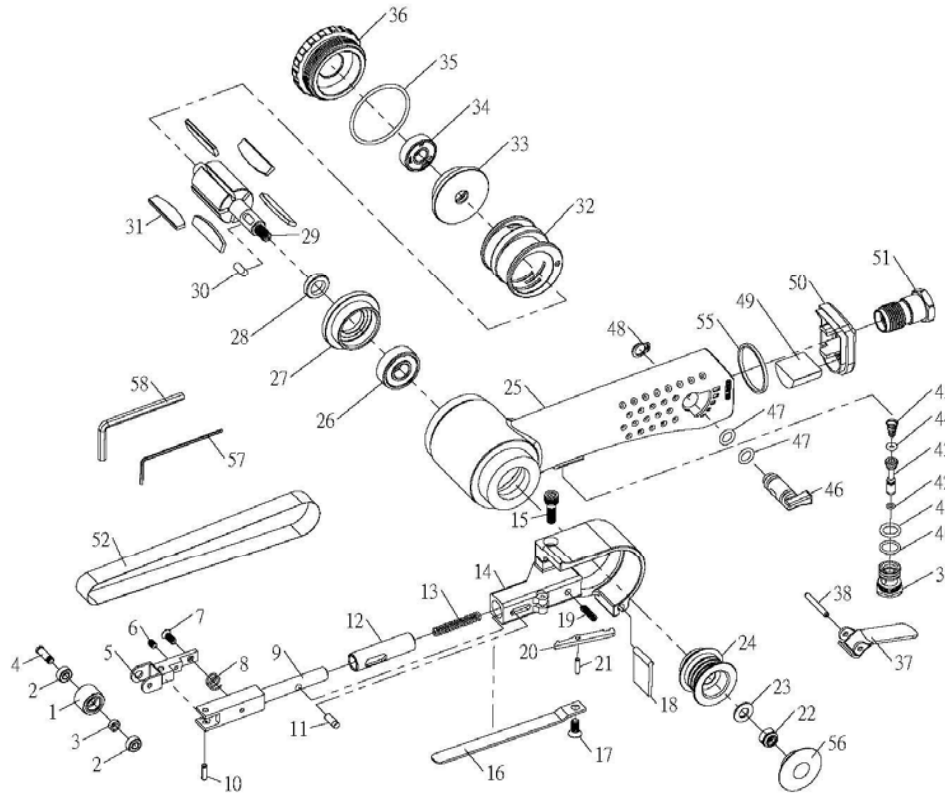
This Kimball Midwest product is warranted to be free from defects in material and workmanship for one year from the date of purchase. This Warranty applies only to products purchased new from Kimball Midwest. This Warranty does not apply to normal wear and tear or to products which have been abused, misused, modified, or repaired by someone other than Kimball Midwest's Authorized Service Center. If this Kimball Midwest product proves defective in material or workmanship within one year after purchase, return it to the Kimball Midwest Authorized Service Center, transportation prepaid, enclosing your name and address, proof of date of purchase, and a short description of the defect. Kimball Midwest will, at its option, repair or replace the defective product free of charge. Repairs or replacements are warranted as described above for the remainder of the original warranty period. Kimball Midwest's sole liability and your exclusive remedy under this Warranty is limited to repair or replacement of the defective product.

(There Are No Other Warranties Expressed Or Implied And Kimball Midwest Shall Not Be Liable For Incidental, Consequential, Or Special Damages, Or Any Other Damages, Costs Or Expenses Excepting Only The Cost Or Expense Of Repair Or Replacement As Described Above.)

Normal wear items are not manufacturer's defects. Some of the common normal wear items are contained in the following repair kits: 879951 and 879952.

Kimball Midwest Authorized Service Center:

Power Tool Repair
371 West Ave.
Tallmadge, OH 44278
(330) 630-0022
www.powertoolrepairohio.com



KM No. 879951 General Maintenance Kit		
No.	Parts Description	Q'ty
13	Tension Spring	1
19	Stopper Spring	1
26	Ball Bearing	1
30	Parallel Key	1
31	Rotor Blade	5
44	O-Ring	1
45	Valve Spring	1
49	Muffler	1

KM No. 879952 Idle Pulley Kit		
No.	Parts Description	Q'ty
1	Idle Pulley	1
2	Ball Bearing	2
4	Idle Pulley Screw	1

No.	Parts Description	Q'ty
1	Idle Pulley	1
2	Ball Bearing	2
3	Washer	1
4	Idle Pulley Screw	1
5	Bracket	1
6	Set Screw	1
7	Set Screw	1
8	Spring	1
9	Tension Bar	1
10	Spring Pin	1
11	Stopper Pin	1
12	Guard Bushing	1
13	Tension Spring	1
14	Guard Body	1
15	Screw	1
16	Shoe 10	1
17	Set Screw	1
18	Dust Cover	1
19	Stopper Spring	1
20	Stopper	1
21	Spring Pin	1
22	Hexagon Nut	1
23	Washer	1
24	Drive Pulley	1
25	Housing	1
26	Ball Bearing	1
27	Front End Plate	1
28	Spacer	1
29	Rotor	1
30	Parallel Key	1
31	Rotor Blade	5
32	Cylinder	1
33	Rear End Plate	1
34	Ball Bearing	1
35	O-Ring	1
36	Cap	1
37	Throttle Lever	1
38	Spring Pin	1
39	Valve Body	1
40	O-Ring	1
41	O-Ring	1
42	O-Ring	1
43	Valve Stem	1
44	O-Ring	1
45	Valve Spring	1
46	Air Regulator	1
47	O-Ring	2
48	Snap Ring	1
49	Muffler	1
50	Exhaust Diffuser	1
51	Inlet Bushing	1
52	Grinding Belt (100grit)	1
53	Grinding Belt (80grit)	1
54	Grinding Belt (120grit)	1
55	Ring	1
56	Pulley Cover	1

(NOTE: Items not available in the repair kits can be purchased from the service center.)