



Operating Instruction Manual

Read through this owner's manual carefully before using the product. Protect yourself and others by observing all safety information, warnings, and cautions. Failure to comply with instructions could result in personal injury and/or damage to the product or property. Please retain these instructions for future reference.

87-1104 Rotary Surface Preparation Tool



Specifications:

Model	Speed +/- 10% (RPM)	Air Inlet NPT (in.)	Required Pressure (psi)	Weight (Lbs)
87-1104	3,500	1/4	90	2.2

General Safety Information

This manual contains information that is very important to know and understand. This information is provided for SAFETY and to PREVENT EQUIPMENT PROBLEMS. To help identify this information, observe the following symbols.

⚠ CAUTION | *Caution indicates a potentially hazardous situation which, if not avoided, could result in death or serious injury.*

⚠ WARNING | *Warning indicates a potentially hazardous situation which, if not avoided, could result in death or serious injury.*

⚠ DANGER | *Danger indicates and imminently hazardous situation which, if not avoided, will result in death or serious injury.*

Entanglement Hazards

Keep away from rotating drive.

⚠ CAUTION | *Do not wear jewelry or loose clothing.*

Choking can occur if neckwear is not kept away from the tool and accessories.

Scalping can occur if hair is not kept away from the tool and accessories.

Avoid direct contact with accessories during use.

Use only proper accessories designed for use with pneumatic tools.

Projectile Hazards

Always wear impact-resistant eye and face protection when using the tool or if you are near it while it is in operation or are working with or on the tool.

Be sure all others in the area are wearing impact-resistant eye and face protection.

⚠ DANGER | *Even small projectiles can injure eyes and cause blindness.*

Workplace Hazards

⚠ WARNING | *Slip/Trip/Fall is a major cause of serious injury or death. Beware of excess hose left on the walking or work surface.*

High sound levels can cause permanent hearing loss.

Maintain a balanced body position and secure footing.

Repetitive work motions, awkward positions and exposure to vibration can be harmful to hands and arms. Operators and maintenance personnel must be physically able to handle the bulk, weight and power of this tool.

Operation

Designed to operate on 90 PSI, lower pressure (below 90 PSI) will reduce performance of the tool while higher air pressure (over 90 PSI) raises the performance of the tool beyond its rated capacity and could cause serious damage to tool and user.

⚠ WARNING | *Always use clean dry air. Excessive moisture and dirt will greatly reduce the life of any air motor.*

We recommend the installation of an inline filter-regulator-lubricator as close to the tool as possible.

Operation

Supply the tool with 90 PSI of clean, dry air. Higher pressure drastically reduces tool life. However, line pressure should be increased to compensate for unusually long hoses (over 25ft). Minimum hose size should be ¼" in diameter with fittings having the same inner diameters.

Air Supply and Connection Hazards

Air under pressure can cause severe injury.

Always shut off air supply, drain hose of air pressure and disconnect tool from air supply when not in use, before changing accessories or when making repairs.

Never direct air at yourself or anyone else.

⚠ CAUTION | *Do not exceed maximum air pressure of 90 PSI.*

Water in the airline will cause damage to the tool.

Drain air tank daily. Clean the air inlet filter screen on a weekly basis.

Lubrication

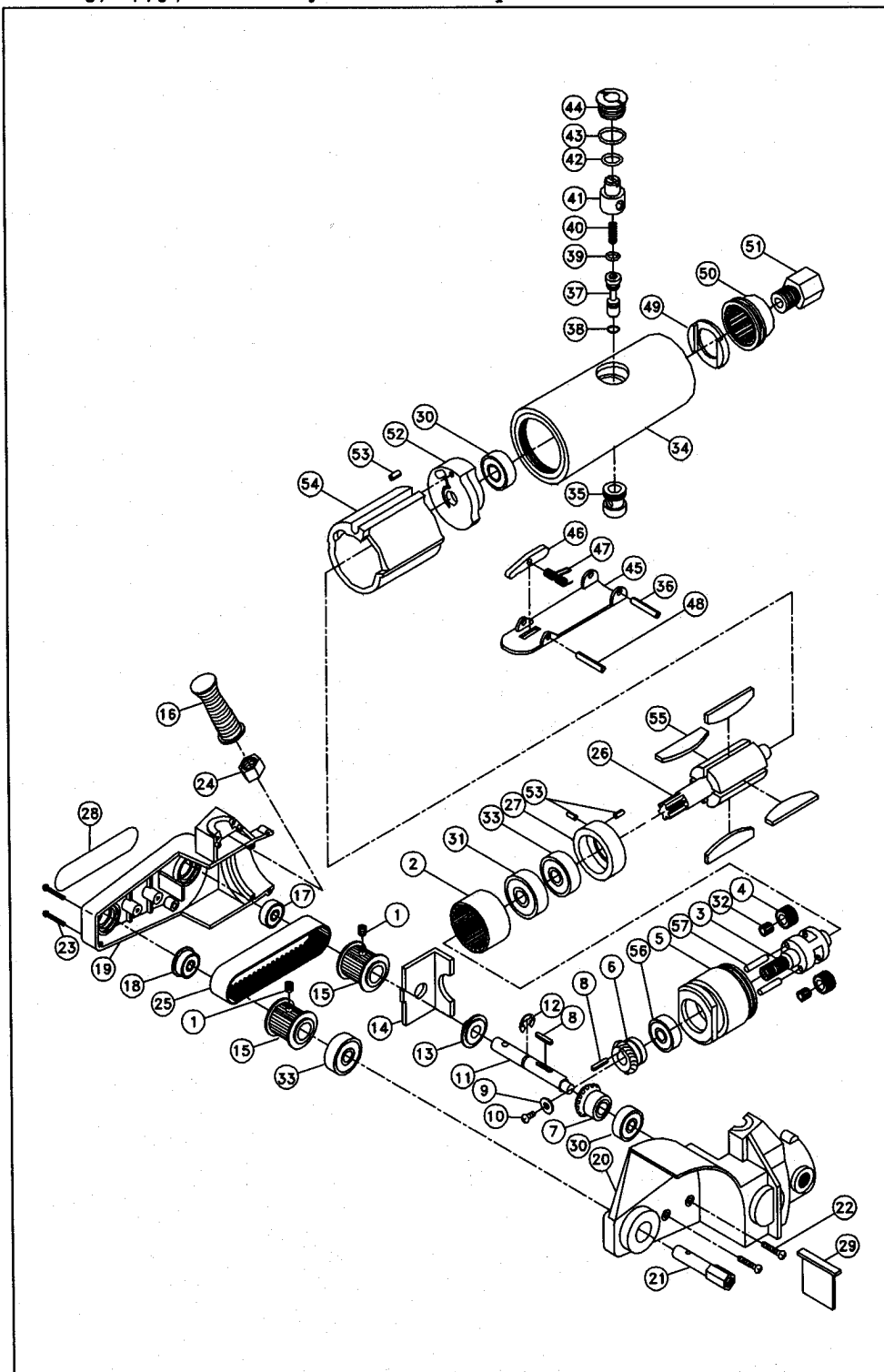
Use an airline lubricator, two drops per minute. If an air line lubricator cannot be used, add air motor oil to the inlet once a day, or more frequently for extended use.

⚠ WARNING: This product can expose you to chemicals including lead, chromium, which are known to the State of California to cause cancer and birth defects or other reproductive harm. For more information go to www.P65Warnings.ca.gov.

Kimball Midwest Authorized Service Center:

Power Tool Repair
371 West Ave.
Tallmadge, OH 44278
(330) 630-0022
www.powertoolrepairohio.com

87-1104 Rotary Surface Preparation Tool



NO.	Parts Description	Q'ty
1	Screw	2
2	Annular Gear(42T)	1
3	Gear Complete	1
4	pinion Gear(17T)	2
5	Housing Nut	1
6	Bevel Gear	1
7	Bevel Gear	1
8	Square Key	2
9	Washer	1
10	M4 Screw	1
11	Gear Spindel	1
12	E-Ring	1
13	Spacer	1
14	Gear Cap	1
15	Pulleys	2
16	Dead Handle	1
17	Bearing(688)	1
18	Bearing(688)	1
19	Blet Casing	1
20	Wheel Casing	1
21	Pulleys Spindle	1
22	Screw	2
23	Screw	10
24	Lock Nut	3
25	Belt	1
26	Rotor(8T)	1
27	Front End Plate	1
28	Label	1
29	Plate	1
30	Ball Bearing(626)	2
31	Ball Bearing(6001)	1
32	Needle Bearing	2
33	Ball Bearing(608)	2
34	Motor Housing	1
35	Valve Bushing	1
36	Lever Pin	1
37	Valve Stem	1
38	"O"-Ring	1
39	"O"-Ring	1
40	Spring	1
41	Regulator	1
42	"O"-Ring	1
43	"O"-Ring	1
44	Valve Screw	1
45	Throttle lever	1
46	Stop Rod	1
47	Spring	1
48	Pin	1
49	Silencer	1
50	Deflector	1
51	Air Inlet	1
52	Rear End Plate	1
53	Pin	3
54	Cylinder	1
55	Rotor Blade	4
56	Ball Bearing(6000)	1
57	Pin	2

(NOTE: Items not available in the repair kits can be purchased from the service center)