



Operating Instructions Manual

3" Flexible Head Cut-Off Tool

87-999



Read through this operating instructions manual carefully before using the product. Protect yourself and others by observing all safety information, warnings, and cautions. Failure to comply with instructions could result in personal injury and/or damage to the product or property. Please retain these instructions for future reference.

SPECIFICATIONS:

Free Speed (RPM)	20,000
Dynamic Air Pressure (PSI)	90
Air Inlet (NPT)	1/4
Avg. Air Consumption (CFM)	4.0
Length (Inches)	9-1/16"
Weight (Lbs.)	2.42

AIR SUPPLY:

Tools of this class operate on a wide range of air pressure. It is recommended that the dynamic air pressure be maintained at 90 PSI at the tool. Higher pressure and unclean air will shorten the tool's life due to accelerated wear and may create a hazardous condition.

Water in the airline will cause damage to the tool. Drain the air tank daily. Clean the air inlet filter screen at least weekly.

The air inlet, used for connecting the tool to the air supply, has a standard 1/4" NPT Thread. Line pressure should be increased to compensate for pressure drops in air hoses over 25' in length.

OPERATING INSTRUCTIONS:

Before using the tool, disconnect the air hose and pour about one tablespoonful of recommended oil (see "Lubrication and Maintenance") into the tool's air inlet. Blow out the airline to clear it of accumulated dirt and moisture, connect the tool and operate on low throttle to evenly disperse the lubricant.

Do not apply extreme pressure while cutting, this will slow the speed of the cutting wheel, reduce cutting efficiency and put additional burden on the motor.

Always start the tool before contacting the workpiece. Apply the cut-off wheel to the workpiece and move in the direction desired to make the cut. When finished cutting, lift the cut-off wheel off the workpiece before stopping the motor.

NOTE: DURING OPERATION SAFETY GLASSES/GOGGLES AND A FACE SHIELD SHOULD ALWAYS

BE WORN TO GUARD AGAINST DEBRIS AND METAL CHIPS. USE ONLY WHEELS RATED AT 20,000 RPM OR HIGHER.



Read the
owners manual
before use



Wear Safety
Gloves



Wear Eye
Protection



Wear Ear
Protection



Wear
Dust Mask

SAFETY PRECAUTIONS:

1. Make sure the clamp nut socket screw (#41) is properly installed and the wheel retaining bolt (#44) is properly tightened to help prevent accidental wheel disconnection (see page 4).
2. Disconnect the tool from the air source before performing service, changing wheels, or when not in use.
3. Never operate the tool without the wheel cover installed.
4. Always use the tool at a safe distance from other people in the work area.
5. Keep the tool away from your body when it is running. Do not wear loose or ill-fitting clothing; remove watches and rings.
6. Secure the work with clamps or a vise so both hands are free to operate the tool. Don't overreach. Keep proper footing and balance at all times.
7. Maintain tools with care. Keep tools clean and oiled for the best performance. Follow the instructions for lubricating and changing accessories. Wiping or cleaning rags and other flammable waste materials must be disposed of as per local, state and federal regulations.

LUBRICATION:

Lubricate the tool daily with a high-quality air tool oil. If no inline oiler is used, run a teaspoon of oil through the tool. The oil can be added into the tool air inlet or into the hose at the nearest connection to the air supply, then run the tool.

MAINTENANCE:

Other factors outside the tool may cause loss of power. Reduced compressor output, excessive draw on the air line, moisture or restriction in air lines or the use of hose connections of improper size or poor condition may reduce the air supply. Grit or gum deposits in the tool may reduce power and may be corrected by cleaning the air strainer and flushing out the tool with Ultra Guard Extreme Air Tool Conditioner [K-M No. 80-293 or 80-291] or Power+ Air Tool Conditioner [K-M No. 80-769].

REPAIR & SERVICING:

For tools out of warranty, Kimball Midwest carries a rebuild kit [K-M No. 87-999-1]. To rebuild, disconnect the tool from the air supply, disassemble the tool, replace any worn or damaged parts, clean, reassemble, and re-lubricate. Tools can also be serviced by Power Tool Repair (371 West Ave. Tallmadge, OH 44278, 330-630-0022).

LIMITED WARRANTY:

Kimball Midwest warrants to the original buyer ("Buyer") all parts and accessories purchased by it from Kimball Midwest against defects in material or workmanship.

Kimball Midwest will repair or replace, at no charge to the buyer, this tool which, after examination by Kimball Midwest, is determined to be defective within a period of 1 year from receipt.

Coverage under this warranty will be provided only if the defective tool has been submitted to Kimball Midwest for inspection.

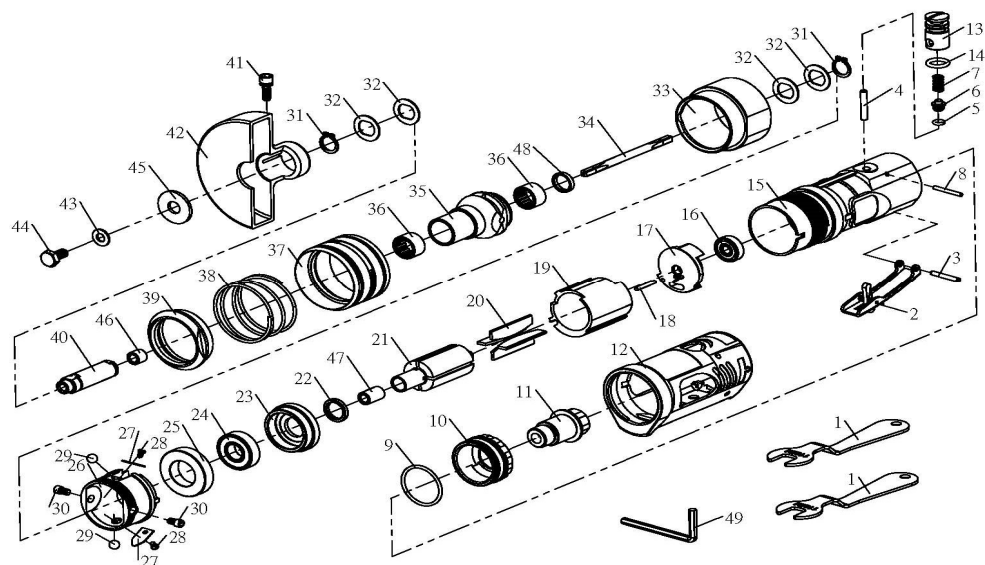
This warranty does not cover any damage to this tool due to alteration, modification, improper installation, accident, post-installation misuse, abuse, negligence, inadequate maintenance, or malfunction of associated parts or equipment not supplied by Kimball Midwest.

This warranty is in lieu of any other warranty, expressed or implied, including any warranty of merchantability or fitness for a particular purpose. Replacement or repair as provided under this warranty is the exclusive remedy of the buyer. Kimball Midwest shall not be liable for any incidental or consequential damages resulting from breach of this warranty. Kimball Midwest neither assumes, nor authorizes any person to assume for it, any other liability in connection with the sale of its products.

If this Kimball Midwest Product proves defective in material or workmanship within one year after purchase, contact the Kimball Midwest Quality Assurance Department at:
All-QualityAssurance@kimballmidwest.com

 **WARNING:** Cancer and Reproductive Harm –www.p65warnings.ca.gov.

Exploded View & Parts List



No.	Description	Qty	No.	Description	Qty
1	Wrench	2	26	Socket Joint	1
2	Safety Lever Assembly	1	27	Dent Spring	2
3	Spring Pin	1	28	Screw	2
4	Valve Shaft	1	29	Steel Ball	2
5	O-Ring	1	30	Screw	2
6	Throttle Valve	1	31	Retaining Ring	2
7	Valve Spring	1	32	Shaft Washer	4
8	Spring Pin	1	33	Lock Ring	1
9	O-Ring	1	34	Power Shaft	1
10	Exhaust Sleeve	1	35	Flex Shaft	1
11	Inlet Bushing	1	36	Needle Bearing	2
12	Housing Cover	1	37	Lock Sleeve	1
13	Valve Screw	1	38	Retainer Spring	1
14	O-Ring	1	39	Retainer Ring	1
15	Housing	1	40	Drive Shaft	1
16	Bearing	1	41	Screw	1
17	Rear End Plate	1	42	Wheel Cover	1
18	Pin	1	43	Washer	1
19	Cylinder	1	44	Hex Bolt	1
20	Rotor Blade	4	45	Wheel Washer	1
21	Rotor	1	46	Grip Rubber	1
22	Washer	1	47	Grip Rubber	1
23	Front End Plate	1	48	Washer	1
24	Ball Bearing	1	49	Hex Wrench	1
25	Spacer Ring	1			

This image shows a blank sheet of white paper with horizontal ruling lines. The lines are evenly spaced and run across the width of the page. There are no margins, text, or other markings on the paper.

Manufactured For:
Kimball Midwest
4800 Roberts Road
Columbus, OH 43228
1-800-233-1294
www.kimballmidwest.com