

The features found on these rugged, KHS100 / KHS500 / KHS503 hose saws series and the accessories included make it the best value of any hose saw in its class.



KHS100 / KHS500 / KHS503 HOSE SAWS SERIES OPERATORS MANUAL

SAFETY PRECAUTIONS



SAFETY PRECAUTIONS



- READ INSTRUCTIONS AND IDENTIFY ALL COMPONENT PARTS BEFORE USING HOSE SAW.
- MOUNT THE KHS100, KHS500, OR KHS503 HOSE SAW ON A STURDY WORKBENCH.
- ALLOW THE BLADE TO REACH FULL SPEED BEFORE STARTING A CUT.
- PERIODICALLY EXAMINE THE BLADE FOR CRACKS AND / OR BROKEN TEETH.
- REPLACE IF NECESSARY.
- KEEP BOTH HANDS AWAY FROM THE CUTTING BLADE.
- DO NOT REMOVE ANY OF THE GUARDS OR SAFETY FEATURES OF THE SAW.
- ALWAYS WEAR EYE PROTECTION, DUST MASK, AND PROTECTIVE GLOVES.

MODELS COVERED

This manual is applicable to different variations of the KHS Hose Saws Series.

TABLE OF CONTENTS

SAFETY PRECAUTIONS-----	2
KHS HOSE SAWS SERIES & TECHNICAL DATA-----	4
INITIAL SET UP-----	5
KHS100 / KHS500 / KHS503 INCLUDED TOOLING-----	6
KHS100 / KHS500 / KHS503 OPTIONAL PARTS-----	7
KHS100 / KHS500 / KHS503 BLADE AWARENESS-----	9
KHS100 / KHS500 / KHS503 HOSE BENDING PINS SET UP-----	10
HOW TO CHANGE SAW BLADE-----	11
HOW TO INSERT THE VACUUM ATTACHMENT-----	13
KHS100 / KHS500 / KHS503 REPLACEMENT ACCESSORIES-----	14
COMPONENT PARTS BREAKDOWN-----	15
WARRANTY STATEMENT-----	19

KHS HOSE SAWS SERIES & TECHNICAL DATA

These rugged, KHS100 / KHS500 / KHS503 dependable saws offer features not found on other saws. Choose the one with the capacity and features which meet your individual requirements.



Technical Data	KHS100	KHS500	KHS503
Capable of cutting:	1-1/4" (4 wire) up to 1" (6 wire)	1-1/4" (4 wire) up to 2" (6 wire)	1-1/4" (4 wire) up to 2" (6 wire)
Dimensions:	L: 28-3/4" x W: 21" x H: 12-1/4"	L: 29-3/4" x W: 26-3/4" x H: 16"	L: 29-3/4" x W: 26-3/4" x H: 16"
Weight:	70 lbs	Weight: 120 lbs	Weight: 120 lbs
Motor	1.5 HP	5 HP	5 HP
Voltage	110 V	230 V	230 V
Phase	1	1	3
Amp	15	30	20

KHS100 / KHS500 / KHS503 INITIAL SET UP

FOLLOW THESE STEPS BEFORE YOU USE YOUR KHS SERIES HOSE SAW FOR THE FIRST TIME.

- Mount your KHS Series Hose Saw on a sturdy workbench in a well-lit area. Workbench should be able to support the hose saw weight.



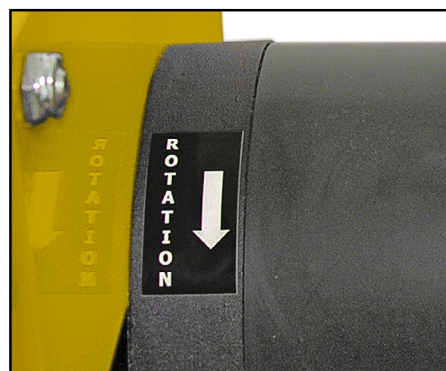
- Check electrical circuit to be certain that it matches the hose saw requirements shown on the tag attached to the hose saw cord.



DO NOT USE AN EXTENSION CORD OR RUN FROM PORTABLE POWER SOURCES AS LOW VOLTAGE CAN DAMAGE THE MOTOR.

- Check to be certain that the blade rotates in the direction of the arrow shown on the motor housing.

Note: Blade also has a rotation arrow.



Note: New blades must be properly conditioned to assure long life and clean cuts. For the first ten cuts, feed the blade slowly through a medium size hose. This will properly break in and condition the blade for long life.



KHS100 / KHS500 / KHS503 INCLUDED TOOLING

- **Hose Bending Pins**

Included for all KHS100 / KHS500 / KHS503 Series.

Hose Bending Pins prevent the blade from binding during a cut.



- **Serrated Blade (General Purpose)**

Included for all KHS100 / KHS500 / KHS503 Series.

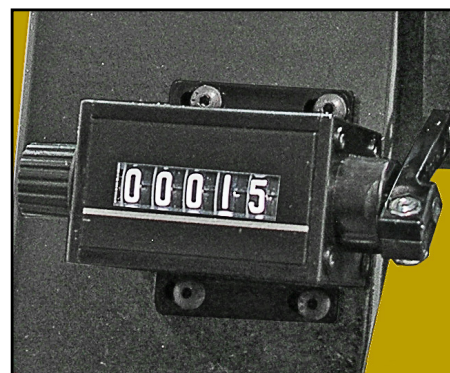
Is an aggressive, universal blade that cuts multi-spiral and braided hose very well.



- **Counter**

Included only for KHS500 / KHS503 Series.
Not available for KHS100.

A resetable counter makes it easy to keep track of the number of cuts made.



- **1 1/4" Vacuum Adapter**

(For 2 1/2" shop vac, or vacuum accessories).

Included for all KHS100 / KHS500 / KHS503 Series.

Vacuum port allow attachment of vacuum system to keep saw and work space clean.



KHS100 / KHS500 / KHS503 OPTIONAL PARTS

- **Hose Helper**

Optional only for KHS500 / KHS503 Series.
Not available for KHS100.

A “Hose Helper” attachment for the KHS500 & KHS503 prevents the hose from being drawn back during a cut and gives the operator the ability to more precisely control the cut length. The “Hose Helper” can be mounted on either end of the saw.



- **Mister Hose Assembly**

Optional only for KHS500 / KHS503 Series.
Not available for KHS100.

The mister sprays a fine mist of air tool oil on the saw blade for longer blade life and cleaner cuts.



- **Hose Channel System**

Available in 5 foot sections only for KHS500 / KHS503 Series.

The Hose Channel System both measures and supports the hoses up to 2 inch diameter as they are being cut.



KHS100 / KHS500 / KHS503 OPTIONAL PARTS

• Mobile Cart

Optional for all KHS100 / KHS500 / KHS503 Series.

KHS hose saw model, can be mounted on the mobile cart for easy moving around the shop.

Mobile Cart comes with (2) lockable swivel casters.

The HS503 Series hose saw is shown, mounted on the mobile cart with the optional hose helper and hose channel installed.



• Scalloped Blade (General Purpose)

Available for all KHS100 / KHS500 / KHS503 Series.



• Double Bevel Blade with SS Slots

Available for all KHS100 / KHS500 / KHS503 Series.



KHS Model	Blade Type	Blade Size Diameter	Arbor Size	Part Number
KHS100	Serrated (Included)	10 inch	1 inch	103502
	Scalloped (Optional)	10 inch	1 inch	104034
	Double Bevel w/ SS Slots (Optional)	10 inch	1 inch	104050
KHS500 & KHS503	Serrated (Included)	12 inch	1 inch	103187
	Scalloped (Optional)	12 inch	1 inch	104033
	Double Bevel w/ SS Slots (Optional)	12 inch	1 inch	102210

KHS100 / KHS500 / KHS503 BLADE AWARENESS

Note: New blades must be properly conditioned to assure long life and clean cuts. For the first ten cuts, feed the blade slowly through a medium size hose. this will properly break in and condition the blade for long life.

Note: The hose should begin to bend before contacting the blade. This will increase blade life and keep the hose from tearing and deforming.

Note: Once the blade and motor reach full RPM apply steady downward pressure on the handle in order to force the hose into the blade. Do not apply enough force to stall the blade, and ease up on the pressure before the blade completes the cut. This will keep from separating the wires as the blade exits the hose.

Note: The edges of the blade may appear to be dull. This does not mean that the blade is not effective.

As long as the blade is still giving clean cuts, do not replace the blade.

NOTE: PAY CLOSE ATTENTION TO THE DIRECTION OF ROTATION MARKED ON THE SERRATED BLADE.

IT IS THE OPPOSITE OF MOST BLADES OF THIS TYPE.

CAUTION: Cracks can cause extremely damage to the blade, periodically examine the blade for cracks and / or broken teeth.



Serrated Blade



Scalloped Blade



Double Bevel w/SS Slots Blade

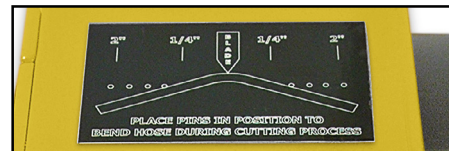


Damaged Blade

KHS100 / KHS500 / KHS503 HOSE BENDING PINS SET UP

Hose Bending Pins Set UP

All the KHS100 / KHS500 / KHS503 series hose saws have a "Hose Bending Pins Position" decal placed on top of the hose saw.



Step 1

Position the hose bending pins according to the hose size.

For example for a 1/2 inch hose, position the pins in the hole closest to the blade.

Note: Pins MUST be positioned in the holes in the saw table such that the hose opens slightly during the cut. Spread the pins further apart for larger hoses.



Step 2

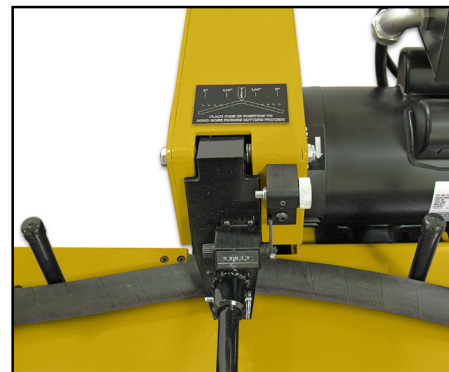
Turn on the hose saw, apply steady downward pressure on the handle in order to force the hose into the blade.

As you making a cut, the hose bending pins will allow the hose to bend as shown in the picture, this will minimize the friction during the cut.



Step 3

For a (larger) 2 inch hose, position the pins further out as shown in the picture.



HOW TO CHANGE THE SAW BLADE

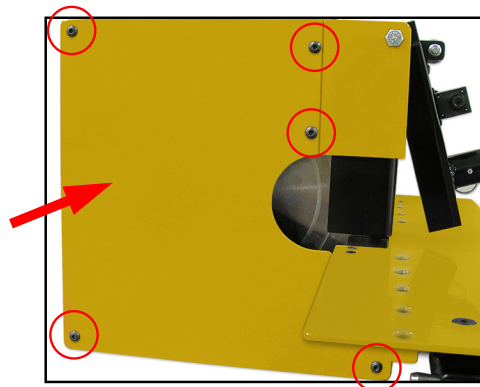
Step 1

MAKE CERTAIN THAT THE HOSE SAW IS TURNED OFF AND UNPLUG IT.

WEAR SAFETY GLASSES AND PROTECTIVE GLOVES AT ALL TIMES WHEN CHANGING SAW BLADE AND OPERATING THE HOSE SAW.

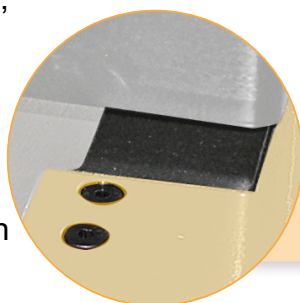
Step 2

Use a 5/32 inch Allen wrench to remove the 5 screws, and the side access panel.



Step 3

Use 1/8 inch Allen wrench to remove the 2 screws, and the Black Saw Blade Access Panel to provide clearance to remove the blade.



Step 4

For KHS100 series, use a 1" wrench.
For KHS500 / KHS503 series, use a 1-1/4" wrench to keep the Motor Shaft Arbor in place.

Note: there is a notch on the motor shaft arbor where the wrench falls into place.



Step 5

Use a 1-1/2" wrench or an adjustable wrench to lose the Hex Jam Nut, remove it and the Blade Grip as well.

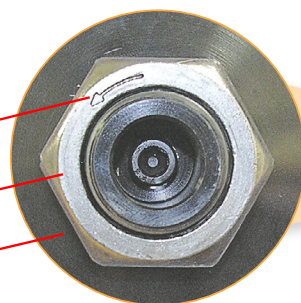
Note: Pay close attention to the tighten rotation arrow on the hex jam nut, this is a left handed hex jam nut.

Note: To lose the hex jam nut would be clockwise, and to tighten it would be counter-clockwise.

Tighten Rotation Arrow

Hex Jam Nut

Blade Grip



HOW TO CHANGE THE SAW BLADE

Step 6

Remove the old blade.

Note: Be careful when removing the old blade.

Note: Always wear safety glasses and protective gloves when changing blade and operating the hose saw.



Step 7

Use an air gun or a clean rag to clean the inside to remove any debris.



Step 8

Make certain that the new blade does not have any broken teeth, cracks or any other damage before installing.

Step 9

Before installing the new blade, if the blade has a rotation arrow make certain that the blade is installed so that it rotates in the direction of the arrow.

Note: Once the new blade is installed, repeat the process in reverse order to install all the parts back on the hose saw.



Note: To lose the hex jam nut would be clockwise, and to tighten it would be counter-clockwise.



DO NOT OPERATE THE SAW WITHOUT
ALL OF THE GUARDS IN PLACE

HOW TO INSERT THE VACUUM ATTACHMENT

Step 1

MAKE CERTAIN THAT THE HOSE SAW IS TURNED OFF AND UNPLUG IT.

WEAR SAFETY GLASSES AND PROTECTIVE GLOVES AT ALL TIMES WHEN OPERATING THE HOSE SAW.

- 1 1/4" Vacuum Port located on rear of hose saw.
Available in all KHS100 / KHS500 / KHS503 Series.

Note: Do not recommend using at the same time as Mister.

Step 2

Remove Plastic Plug (A).



Step 3

Insert supplied 1 1/4" Vacuum Attachment (B).
(For 2 1/2" shop vac, or vacuum accessories).

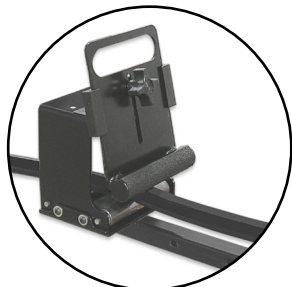


Step 4

Run vacuum during cutting process.



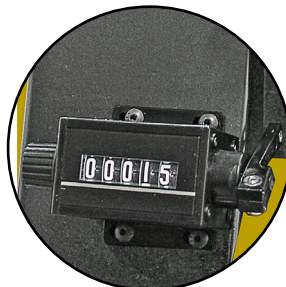
KHS100 / KHS500 / KHS503 REPLACEMENT ACCESSORIES



Hose Helper
P/N:103297



Hose Bending Pins
P/N:103665



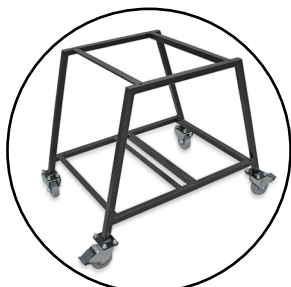
Hose Saw Counter
P/N:1895T42



Mister Hose Assembly
P/N:103172



Hose Channel System
P/N:103073



Mobile Cart
P/N:101956



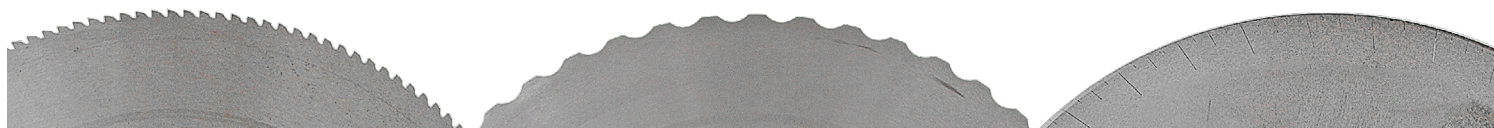
Serrated Blade



Scalloped Blade

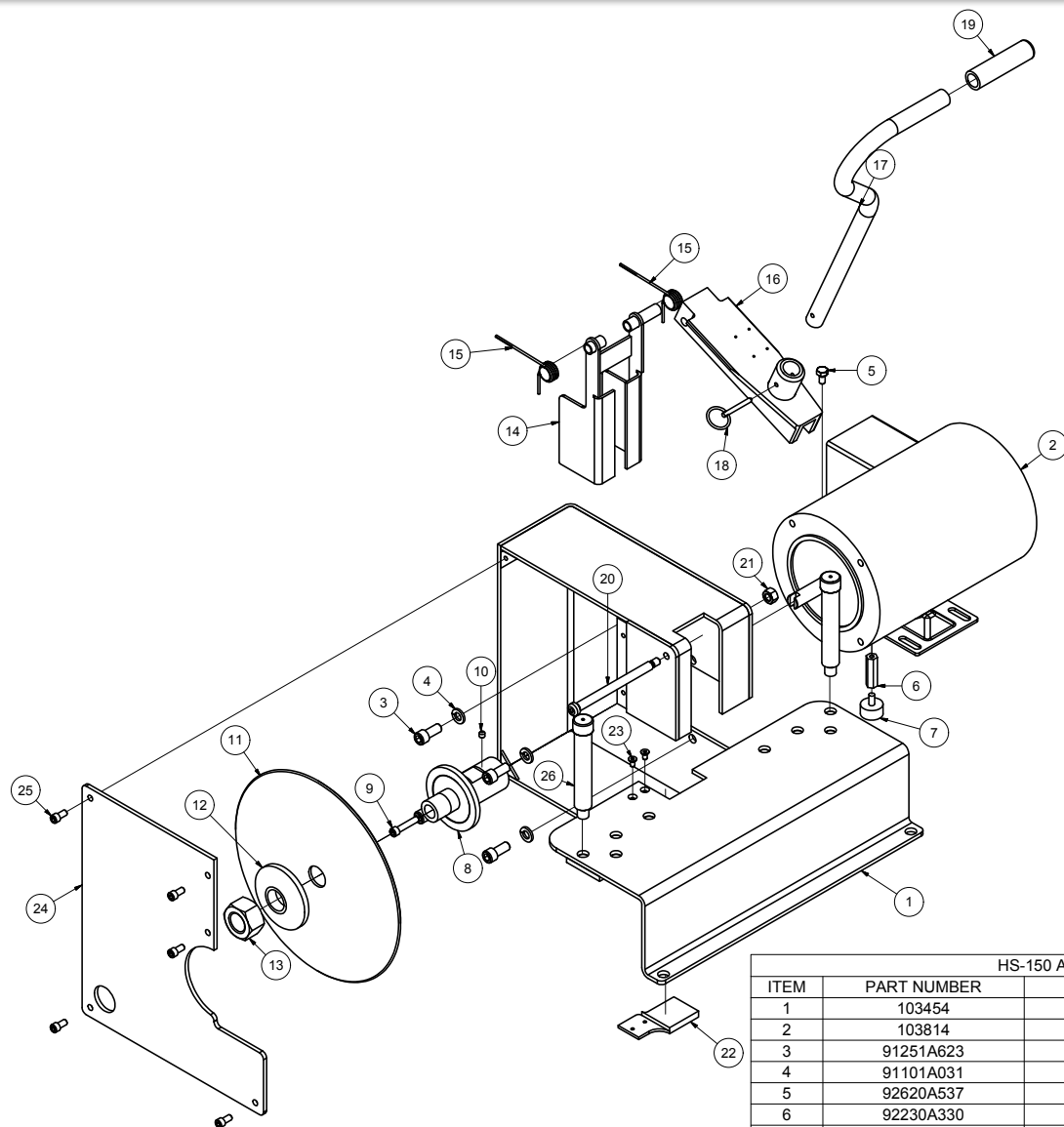


Double Bevel w/
SS Slots Blade



KHS Model	Blade Type	Blade Size Diameter	Arbor Size	Part Number
KHS100	Serrated (Included)	10 inch	1 inch	103502
	Scalloped (Optional)	10 inch	1 inch	104034
	Double Bevel w/ SS Slots (Optional)	10 inch	1 inch	104050
KHS500 & KHS503	Serrated (Included)	12 inch	1 inch	103187
	Scalloped (Optional)	12 inch	1 inch	104033
	Double Bevel w/ SS Slots (Optional)	12 inch	1 inch	102210

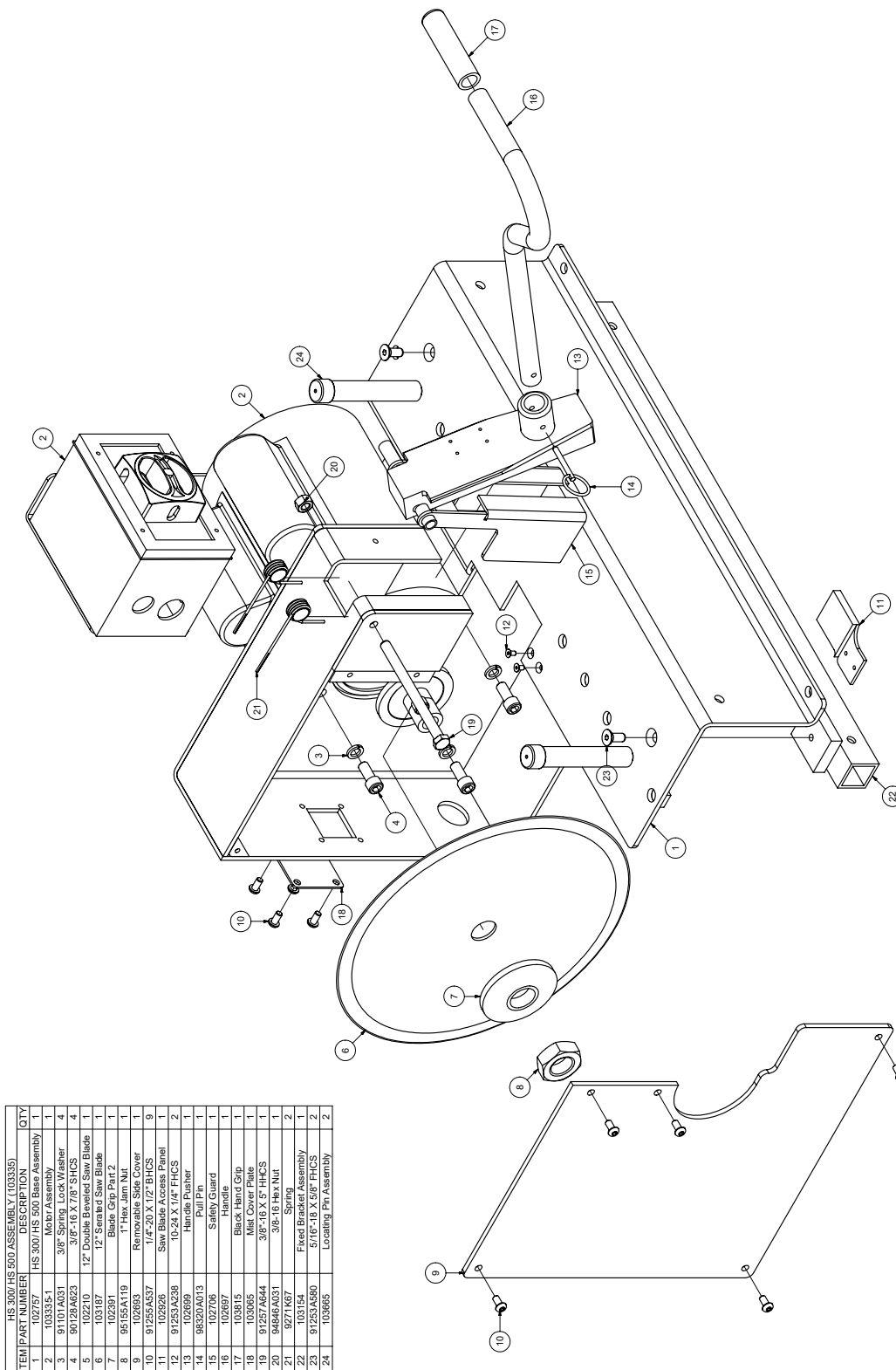
COMPONENT PARTS BREAKDOWN



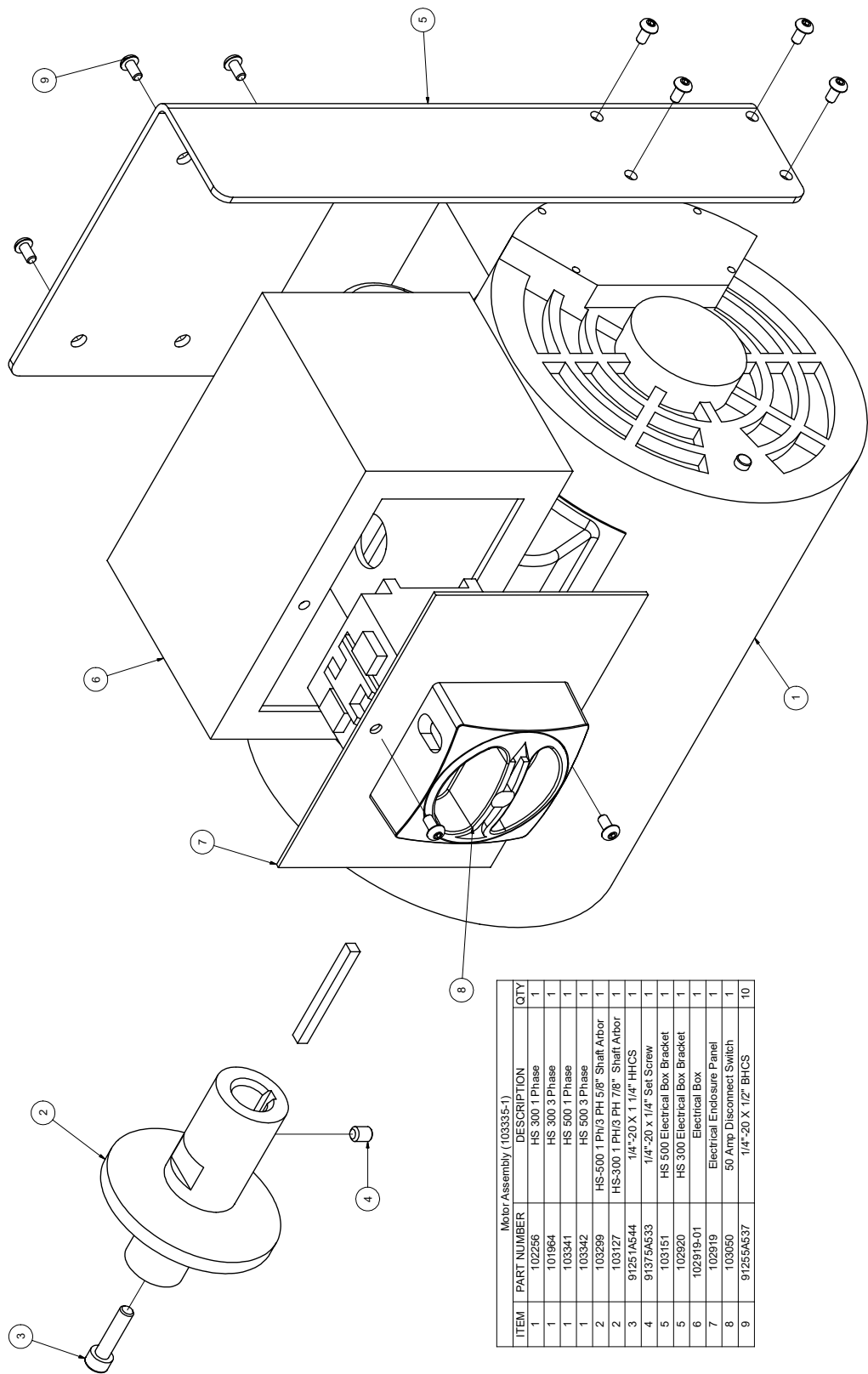
HS-150 ASSEMBLY (103734)

ITEM	PART NUMBER	DESCRIPTION	QTY
1	103454	HS150 BASE ASSEMBLY	1
2	103814	1 HP 110V 3600RPM MOTOR	1
3	91251A623	3/8-16 X 7/8 SHCS	4
4	91101A031	3/8 LOCK WASHER	4
5	92620A537	1/4-20 X 1/2 HHS	1
6	92230A330	1/4-20 X 1-1/2" HEX STANDOFF	1
7	103774	1/4-20 RUBBER VIBRATION FOOT	1
8	103299	HS-150 5/8" MOTOR SHAFT ARBOR	1
8	103127	HS-300/500 5/8" MOTOR SHAFT ARBOR	1
9	91251A544	1/4-20 X 1 1/4 SHCS	1
10	91375A533	1/4-20 X 1/4 SET SCREW	1
11	103502	10 INCH SERRATED BLADE	1
12	102391	HS-150/300/500 BLADE GRIP	1
13	90083A260	1/14 LEFT HAND JAM NUT	1
14	102706	HS-150/300/500 SAFETY GUARD ASSEMBLY	1
15	9271K67-CCW	CCW TORSION SPRING - RIGHT SIDE	1
15	9271K67-CW	CW TORSION SPRING - LEFT SIDE	2
16	102699	HS-150/300/500 PUSHER BASE	1
17	102697	HS-150/300/500 HANDLE	1
18	98320A013	3/16 X 1.3 PULL PIN	1
19	103815	BLACK HAND GRIP	1
20	91247A644	3/8-16 X 4 1/2 SHOULDER SHCS	1
21	90566A031	3/8 NYLOC JAM NUT	1
22	102926	HS-150/300/500 SAW BLADE ACCESS PANEL	1
23	91253A240	10-24 X 3/8 FHCS	2
24	103476	HS150 ACCESS PANEL	1
25	91306A375	1/4-20 X 1/2 SHCS	5
26	103665	HS-150/300/500 LOCATING PIN ASSEMBLY	2

COMPONENT PARTS BREAKDOWN

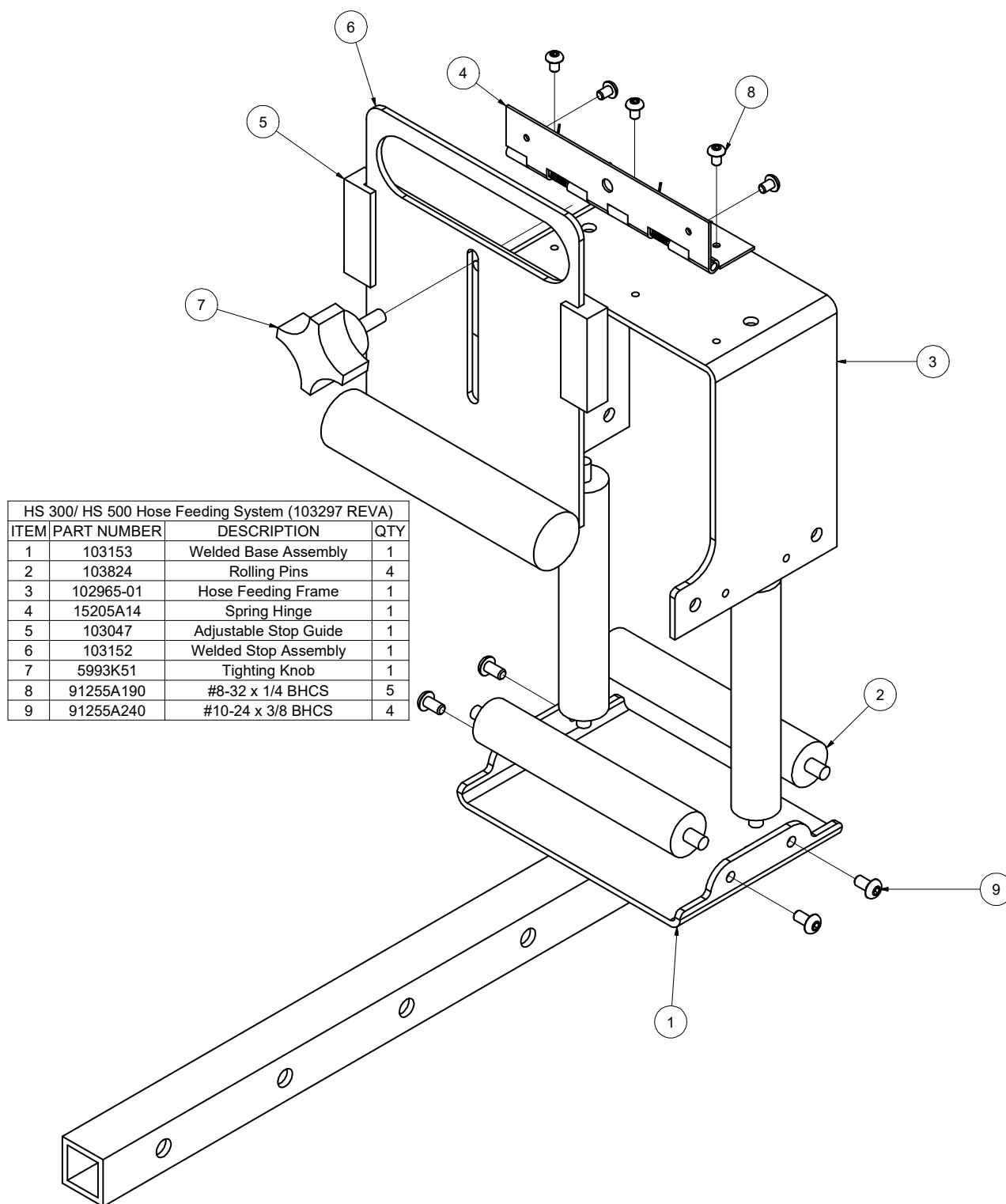


COMPONENT PARTS BREAKDOWN



Motor Assembly (10335-1)			
ITEM	PART NUMBER	DESCRIPTION	QTY
1	102256	HS 300 1 Phase	1
1	101964	HS 300 3 Phase	1
1	103341	HS 500 1 Phase	1
1	103342	HS 500 3 Phase	1
2	103299	HS-500 1 Ph/3 Ph 5/8" Shaft Arbor	1
2	103127	HS-300 1 Ph/3 Ph 7/8" Shaft Arbor	1
3	91251A544	1/4"-20 X 1 1/4" HHCS	1
4	91375A533	1/4"-20 x 1/4" Set Screw	1
5	103151	HS 500 Electrical Box Bracket	1
5	102920	HS 300 Electrical Box Bracket	1
6	102919-01	Electrical Box	1
7	102919	Electrical Endorsement Panel	1
8	103050	50 Amp Disconnect Switch	1
9	91255A537	1/4"-20 X 1/2" BHCS	10

COMPONENT PARTS BREAKDOWN



HS 300/ HS 500 Hose Feeding System (103297 REVA)			
ITEM	PART NUMBER	DESCRIPTION	QTY
1	103153	Welded Base Assembly	1
2	103824	Rolling Pins	4
3	102965-01	Hose Feeding Frame	1
4	15205A14	Spring Hinge	1
5	103047	Adjustable Stop Guide	1
6	103152	Welded Stop Assembly	1
7	5993K51	Tightening Knob	1
8	91255A190	#8-32 x 1/4 BHCS	5
9	91255A240	#10-24 x 3/8 BHCS	4

WARRANTY STATEMENT

Kimball Midwest's "KHS" Series Hose Saws are warranted to be free of defects in workmanship and materials for one year from the date of purchase. This warranty terminates if the product becomes unusable for reasons other than defects in workmanship and material.

A "KHS" Series Hose Saws proven to be defective in workmanship or material will be repaired or replaced at no charge. To obtain benefits of this warranty, first, contact your Kimball Midwest sales representative or the Quality Assurance Department at (800) 233-1294.

This warranty does not cover any product or part which is worn out, abused, altered, used for a purpose other than for which it was intended, or used in a manner which was inconsistent with any instructions regarding its use.