



## Operating Instructions Manual

### 0.5HP 5-in-1 Pneumatic Tool Kit

**84-150**



Read through this operating instructions manual carefully before using the product. Protect yourself and others by observing all safety information, warnings, and cautions. Failure to comply with instructions could result in personal injury and/or damage to product or property. Please retain instructions for future reference.

## SPECIFICATIONS:

	Anvil Size	Free Speed	Max. Torque	Net Weight	Overall Length	Avg. Air Consumption
Air Ratchet Wrench	3/8"	160 rpm	70 ft-lb	3.3 lb	13-13/32"	4.0 CFM
	Collect Size	Free Speed	Cylinder Power	Net Weight	Overall Length	Avg. Air Consumption
Air Die Grinder	1/4" & 1/8"	20,000 rpm	0.5 HP	1.6 lb	7-15/16"	4.0 CFM
	Collect Size	Free Speed	Cylinder Power	Net Weight	Overall Length	Avg. Air Consumption
Air Angle Die Grinder	1/4" & 1/8"	14,000 rpm	0.5 HP	1.98 lb	7-15/16"	4.0 CFM
	Pad Dia	Free Speed	Spindle Size	Net Weight	Overall Length	Avg. Air Consumption
Air Angle Grinder	3"	14,000 rpm	3/8"-24	1.98 lb	8-5/16"	4.0 CFM
	Chuck Size	Free Speed	Cylinder Power	Net Weight	Overall Length	Avg. Air Consumption
Air Drill	3/8"	2,500 rpm	0.5 HP	2.4 lbs	9-3/4"	4.0 CFM

Air Inlet Pressure: 90 PSI

Air Inlet Size: 1/4"

## AIR SUPPLY:

Tools of this class operate at a wide range of air pressure. It is recommended that the dynamic air pressure be maintained at 90 PSI at the tool. Higher pressure and unclean air will shorten the tool's life due to accelerated wear and may create a hazardous condition.

Water in the air line will cause damage to the tool. Drain the air tank daily. Clean the air inlet filter screen at least weekly.

The air inlet, used for connecting the air supply, has a standard 1/4" NPT thread.

Line pressure should be increased to compensate for pressure drops in air hoses over 25' in length.

**OPERATING INSTRUCTIONS:**

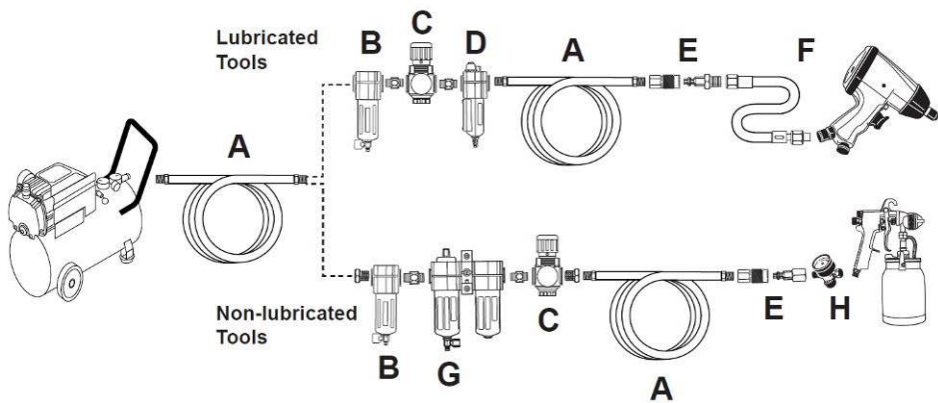
To remove tools from the air motor body, remove the air supply and pull back the locking collar, as indicated by the arrow, and pull the tool head off of the air motor.

To install tools onto the air motor body, simply pull back the locking collar and push the tool head onto the air motor body. Once the tool is seated, release the locking collar and reconnect the air supply

An external air regulator can be used as an air throttle and can be used for setting positive speed control.

Have the throttle in the “off” position when connecting the tool to the air supply. Disconnect the tool before performing service, changing drill bits and when not in use. Always use the tool a safe distance from other people in the work area

Airline Setup (components not included):



	Description	Function
A	Air Hose	Connects air to tool
B	Filter	Prevents dirt and condensation from damaging tool or work piece
C	Regulator	Adjusts air pressure to tool
D	Lubricator (optional)	For air tool lubrication
E	Coupler and Plug	Provides quick connection and release
F	Leader Hose (optional)	Increases coupler life
G	Air Cleaner / Dryer (optional)	Prevents water vapor from damaging work piece
H	Air Adjusting Valve (optional)	For fine tuning airflow at tool



Read the  
owners manual  
before use



Wear Safety  
Gloves



Wear Eye  
Protection



Wear Ear  
Protection



Wear  
Dust Mask

 **WARNING:** Cancer and Reproductive Harm – [www.p65warnings.ca.gov](http://www.p65warnings.ca.gov).

## **SAFETY PRECAUTIONS:**

1. Make sure the RPM rating of the drill bit and abrasives are compatible with the free speed of the tool. Over-speeding an accessory is dangerous and can cause personal injury.
2. Disconnect the tool before performing service, changing accessories, or when not in use.
3. Always use the tool a safe distance from other people in the work area.
4. Keep the tool away from your body when it is running. Do not wear loose or ill-fitting clothing; remove watches and rings.
5. Secure the work with clamps or a vise so both hands are free to operate the tool. Don't overreach. Keep proper footing and balance at all times.
6. Maintain tools with care. Keep tools clean and oiled for the best performance. Follow the instructions for lubricating and changing accessories. Wiping or cleaning rags and other flammable waste materials must be disposed of as per local, state and federal regulations.

## **LUBRICATION:**

Lubricate the tool daily with a high quality air tool oil. If no air line oiler is used, run a teaspoon of oil through the tool. The oil can be added into the tool air inlet or into the hose at the nearest connection to the air supply, then run the tool.

## **MAINTENANCE:**

Other factors outside the tool may cause loss of power. Reduced compressor output, excessive draw on the air line, moisture or restriction in air lines or the use of hose connections of improper size or poor condition may reduce the air supply. Grit or gum deposits in the tool may reduce power and may be

corrected by cleaning the air strainer and flushing out the tool with Ultra Guard Extreme Air Tool Conditioner [K-M No. 80-293 or 80-291] or Power+ Air Tool Conditioner [K-M No. 80-769].

### **REPAIR & SERVICING:**

For tools out of warranty Kimball Midwest carries a General Maintenance Kit [K-M No. 84-151]. Tools can also be serviced by Power Tool Repair (371 West Ave. Tallmadge, OH 44278, 330-630-0022).

### **LIMITED WARRANTY:**

Kimball Midwest warrants to the original buyer ("Buyer") all parts and accessories purchased by it from Kimball Midwest against defects in material or workmanship.

Kimball Midwest will repair or replace, at no charge to the buyer, this tool which, after examination by Kimball Midwest, is determined to be defective within a period of 1 year from receipt.

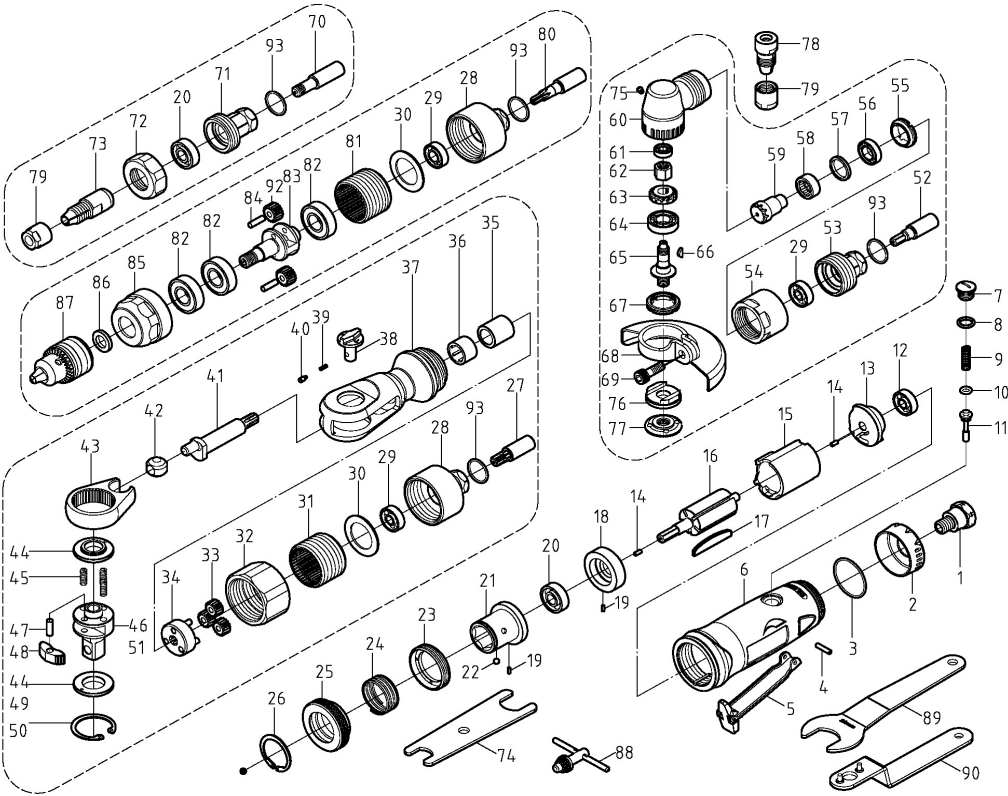
Coverage under this warranty will be provided only if the defective tool has been submitted to Kimball Midwest for inspection.

This warranty does not cover any damage to this tool due to alteration, modification, improper installation, accident, post-installation misuse, abuse, negligence, inadequate maintenance, or malfunction of associated parts or equipment not supplied by Kimball Midwest.

This warranty is in lieu of any other warranty, expressed or implied, including any warranty of merchantability or fitness for a particular purpose. Replacement or repair as provided under this warranty is the exclusive remedy of the buyer. Kimball Midwest shall not be liable for any incidental or consequential damages resulting from breach of this warranty. Kimball Midwest neither assumes, nor authorizes any person to assume for it, any other liability in connection with the sale of its products.

If this Kimball Midwest Product proves defective in material or workmanship within one year after purchase, contact the Kimball Midwest Quality Assurance Department at [All-QualityAssurance@kimballmidwest.com](mailto:All-QualityAssurance@kimballmidwest.com)

# Exploded View & Parts List



No.	Description	Qty	No.	Description	Qty	No.	Description	Qty
1	Air Inlet	1	34	Gear Carrier	1	63	Bevel Gear	1
2	Exhaust Deflector	1	35	Bushing	1	64	Ball Bearing	1
3	O-Ring	1	36	Needle Bearing	1	65	Anvil	1
4	Spring Pin	1	37	Ratchet Housing	1	66	Key	1
5	Trigger	1	38	Reverse Lever	1	67	Cylinder Set Screw	1
6	Housing	1	39	Spring	1	68	Wheel Guard	1
7	Screw	1	40	Lock Pin	1	69	Screw	1
8	O-Ring	1	41	Eccentric Shaft	1	75	Oil Drop	1
9	Spring	1	42	Drive Bushing	1	76	Bushing	1
10	O-Ring	1	43	Yoke	1	77	Lock Nut	1
11	Pin Valve Rod	1	45	Spring	3	89	Wrench	1
12	Ball Bearing	1	47	Pin	1	90	Wrench	1
13	Rear Plate	1	48	Ratchet Pawl	1	Air die grinder		
14	Spring Pin	2	50	Retaining Ring	1	70	Anvil	1
15	Cylinder	1	93	O-Ring	4	71	Lock Nut	1
16	Rotor	1	3/8 Inch Drive			72	Lock Nut	1
17	Blade	5	44	Thrust Washer(3/8")	2	73	Chuck	1
18	Front Plate	1	46	Anvil(3/8")	1	74	Wrench	3
19	Pin	2	1/2 Inch Drive					
20	Ball Bearing	2	44	Thrust Washer(3/8")	1	Air angle die grinder		
21	Drive Bushing	1	51	Anvil(1/2")	1	78	Chuck	1
22	Steel Ball	3	49	Thrust Washer(1/2")	1	79	Lock Nut	2
23	Cylinder Set Screw	1	Air angle grinder					
24	Spring	1	52	Anvil	1	Air Drill		
25	Bit Sleeve	1	53	Lock Nut	1	80	Anvil	1
26	Retaining Ring	1	54	Lock Nut	1	81	Internal Gear	1
Air ratchet wrench			55	Cylinder Set Screw	1	82	Ball Bearing	3
27	Anvil	1	56	Ball Bearing	1	83	Gear Carrier	1
28	Lock Nut	2	57	Washer	1	84	Pin	2
29	Ball Bearing	3	58	Needle Bearing	1	85	Front Casing	1
30	Washer	2	59	Driving Gear Spindle	1	86	Washer	1
31	Internal Gear	1	60	Angle Housing	1	87	Chuck	1
32	Lock Nut	1	61	Ball Bearing	1	88	Allen Key	1
33	Gear	3	62	Lock Nut	1	92	Gear	2

[illegible]

Manufactured For:  
**Kimball Midwest**  
4800 Roberts Road  
Columbus, OH 43228  
1-800-233-1294  
[www.kimballmidwest.com](http://www.kimballmidwest.com)